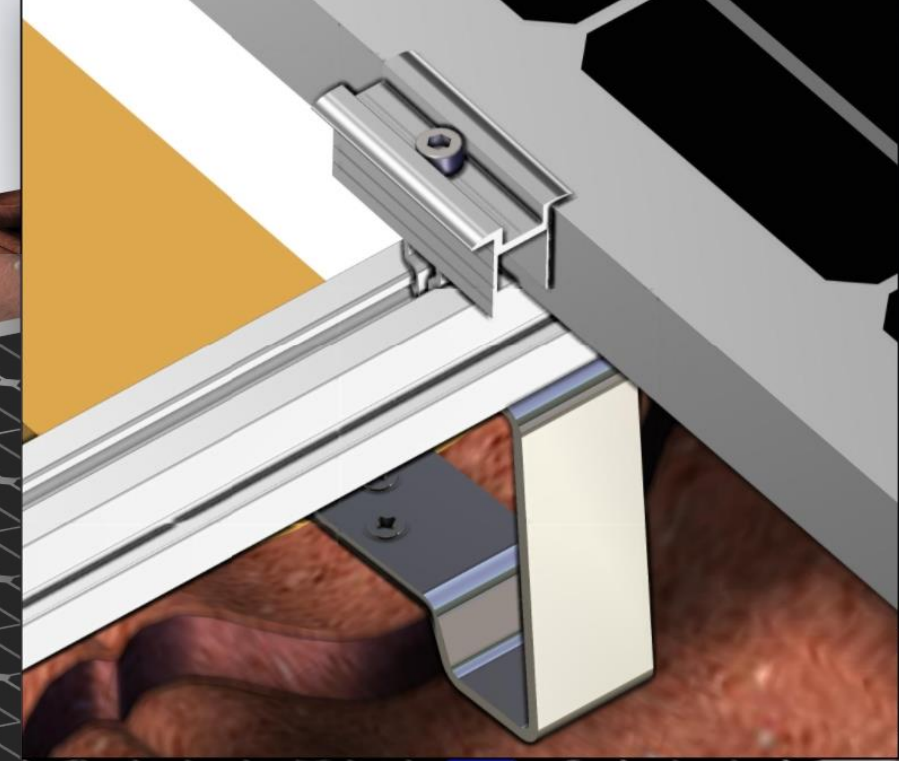


CON SOL

PV structure systems

Quick-fixture system for GERARD panel roofs

The system is suitable for all types of roof panels with GERARD sanding. The construction is screwed into the rafters or any other strong components of the roof under construction. The main hooks hide and adapt according to the shape of the roof. The system allows great positioning flexibility of the solar panels, because the final layout depends only on the mounting points of the "Click" system. The main advantages are a small number of components and efficient cooling. The construction is wind and snow resistant.



Main components:



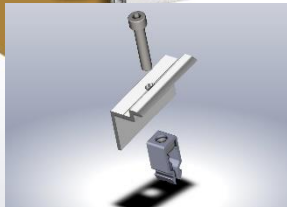
GERARD hook



T-bolt M10 with nut



Wood screw



End clamp with »Click« system



Middle clamp with »Click« system



Main profile



Extension plug



Self-tapping screw



ADJUSTABLE

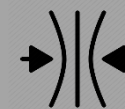


FAST



EFFICIENT COOLING

ADAPTABLE

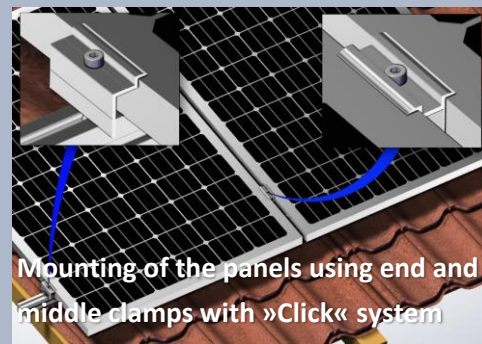
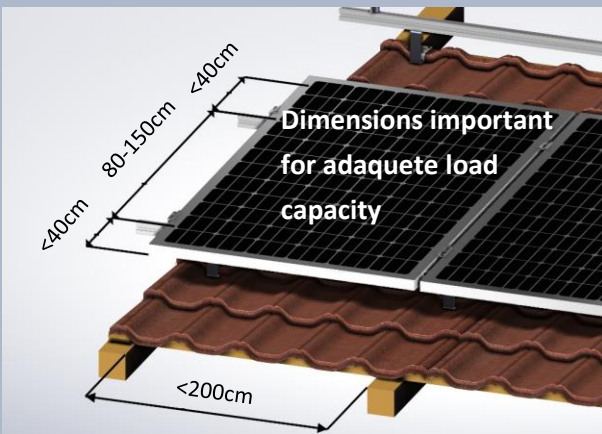


LIGHTWEIGHT



WATERPROOF





TEHNIČNI PODATKI CONSOL

Application	All roof panels with GERARD sanding
Roof angle	From 15°
Fixture	Mounting on rafters
Panel dimensions	The adaptable system allows a wide range of dimensions
Material	Stainless steel, aluminium, EPDM
Max snow load	0 – 2,4 kN/m ² (with panels)
Max wind speed	0-110 km/h –zones 1,2,3
Distance from roof	140 mm or custom

