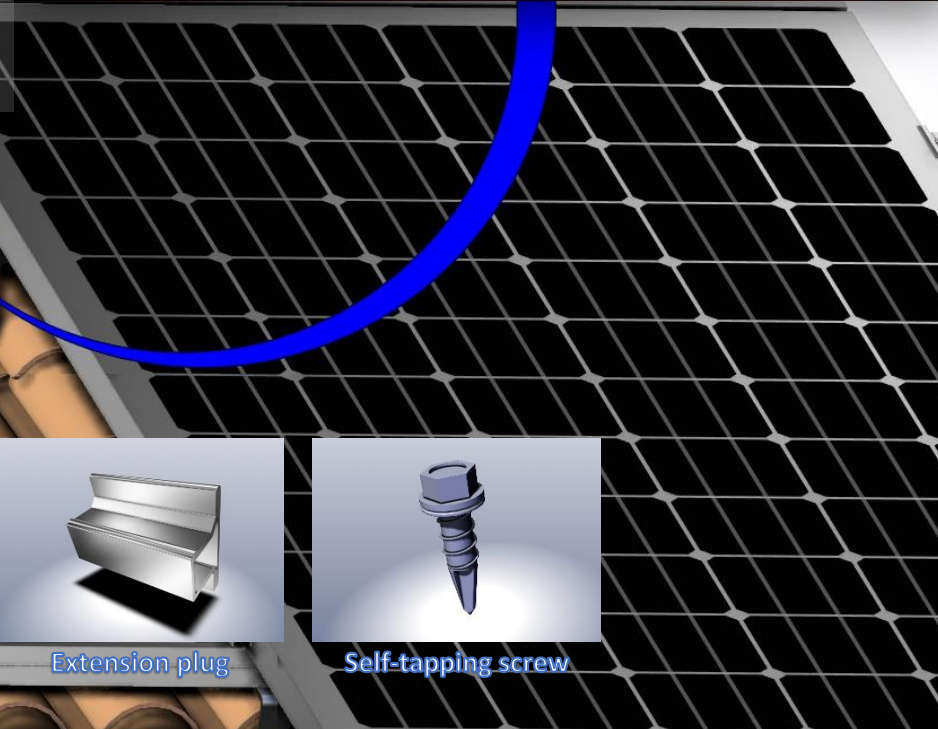
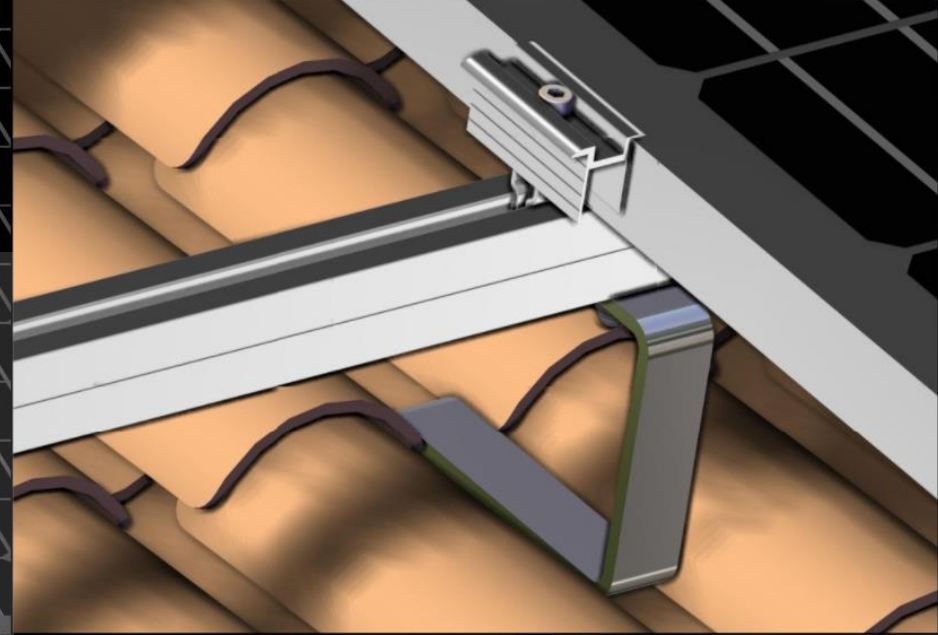


con sol

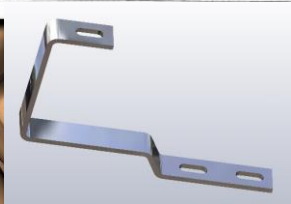
PV structure systems

Quick-fixture hook profile system for Mediterranean style roof

The system is suitable for all Mediterranean roofs with mounting on wooden or concrete under construction. It gives great positioning flexibility of the panels, because layout depends only on the positions of the hooks and "Click" system clamps. The main advantages are a small number of parts and very efficient cooling. The construction is wind and snow resistant.



Main components:



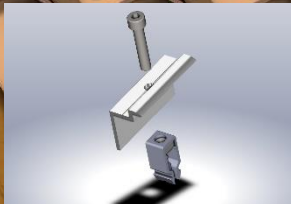
Hanger bolt plate



Wood/concrete screw



M10 T-bolt with nut



End clamp with "Click" system



Middle clamp with "Click" system



Main profile



Extension plug



Self-tapping screw



ADJUSTABLE

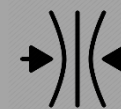


FAST



EFFICIENT COOLING

ADAPTABLE

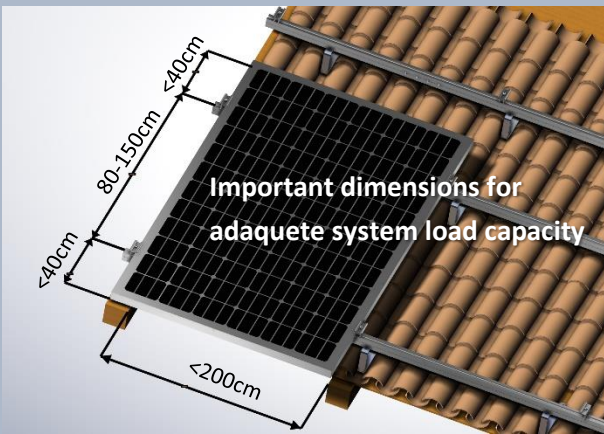


LIGHTWEIGHT



WATERPROOF





TECHNICAL DATA CONSOL

Application	All Mediterranean style roofs
Roof angle	From 10°
Fixture	Mounting on wooden or concrete under construction
Panel dimensions	The adaptable system allows a wide range of panels
Panel orientation	Horizontally or vertically
Material	Stainless steel, aluminium, EPDM
Max. load capacity	Vertical – 100 kg Horizontal – 180 kg
Max snow load	0 – 2,4 kN/m ² (with panels)
Max wind speed	0-110 km/h –wind zones 1,2,3
Height adjustment	162-194 mm

