

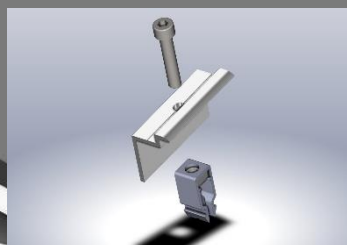
con sol

PV structure systems

Triangular quick-fixure profile system

The system is suitable for all types of straight roofs. It offers a wide variety of possible positions and the whole construction is movable and may be assembled around obstacles. The main advantage of the system is the number of components. Different lengths of the assembly parts allow the panels to be set under different angles.

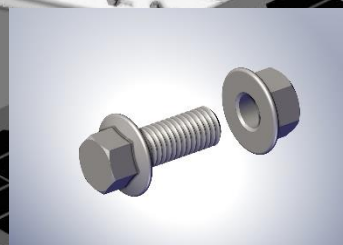
Main
components:



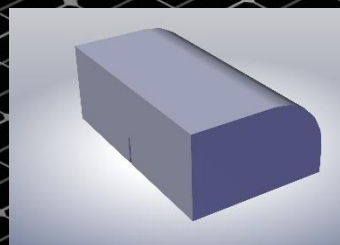
End clamp with »Click«
system



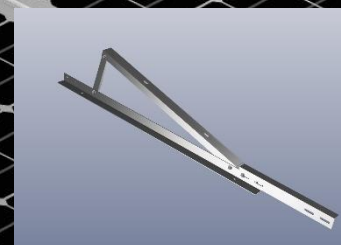
Middle clamp with »Click«
system



M10 bolt with nut



Concrete weight



Assembled profile triangle



ADJUSTABLE



FAST



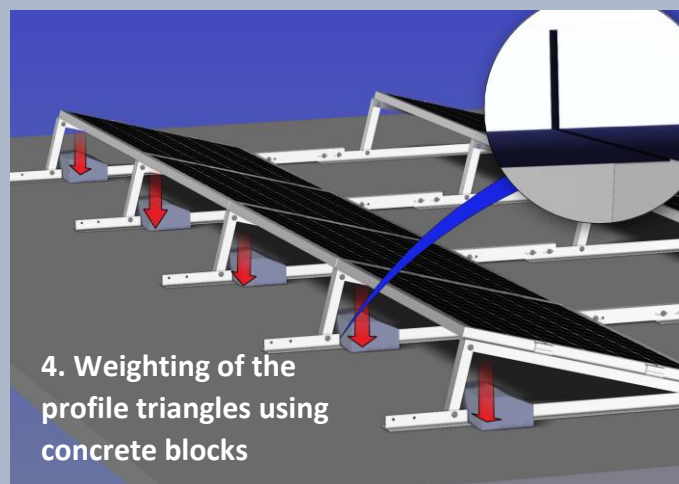
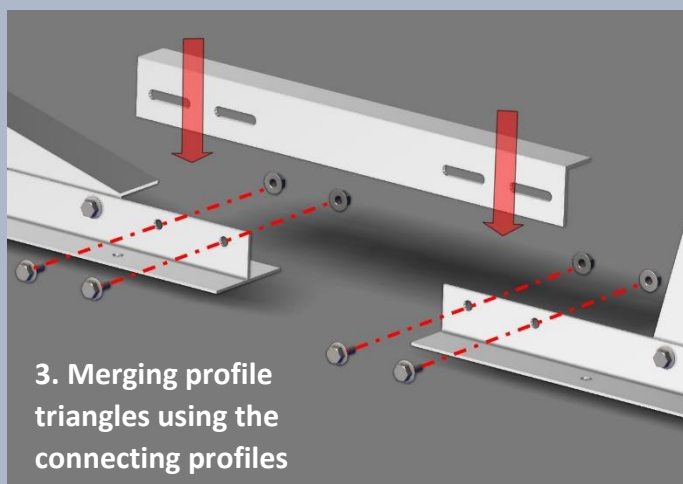
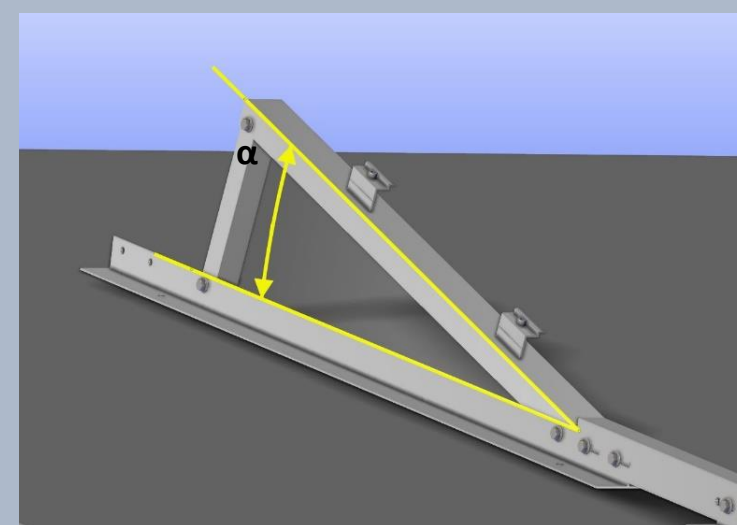
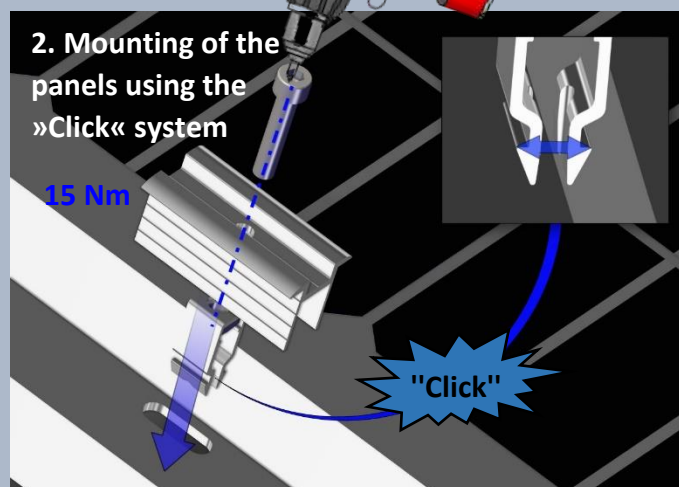
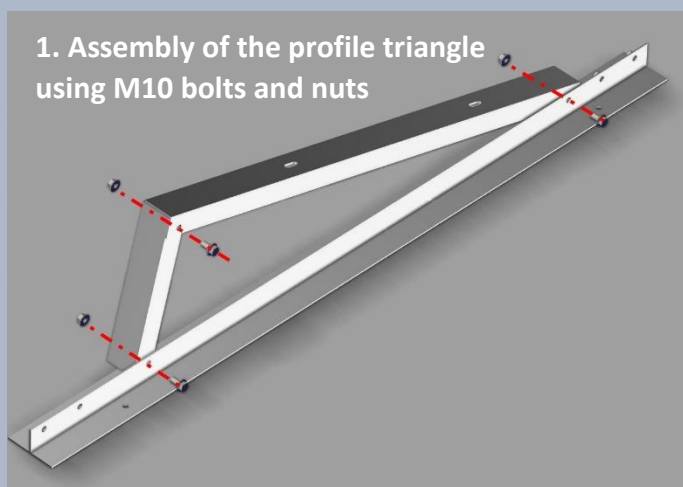
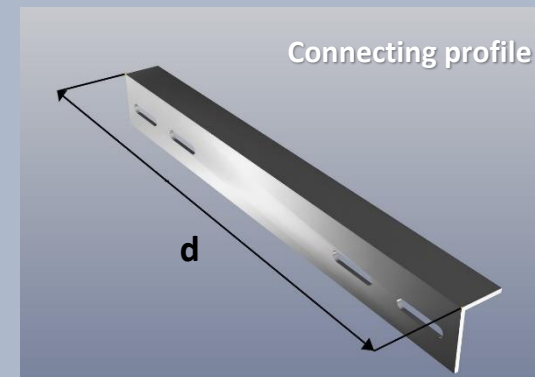
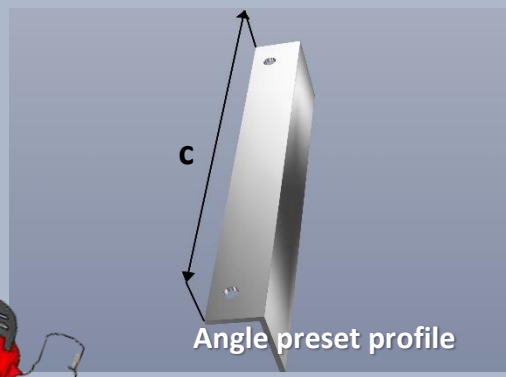
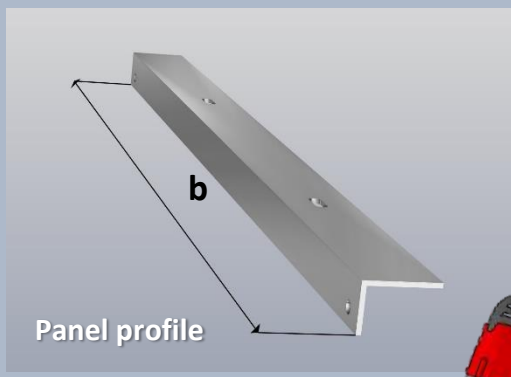
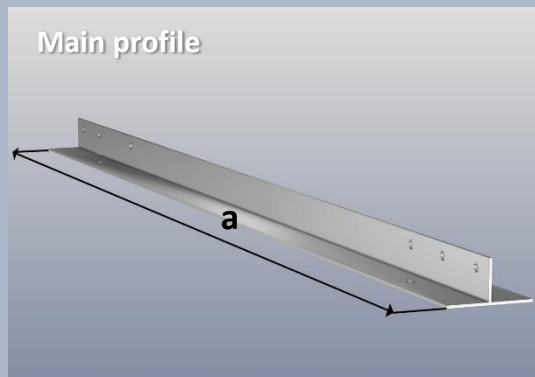
EFFICIENT
COOLING

ADAPTABLE



LIGHTWEIGHT





Angle α :	10°	15°	Poljubno
Dimension c	212 mm	300 mm	_____
Dimension d	315 mm	515 mm	_____
Dimension a	1435 mm		
Dimension b	995 mm		