

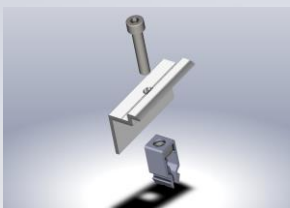
con sol

PV structure systems

Outside panel support construction

The system is suitable for all flat ground. The system has great placement flexibility and amazing adjustment capabilities. The system is very easy to assemble and the "Click" system makes the mounting of the panels very easy and simple. The construction

Main components:



End clamp with
»Click« system



Middle clamp with
»Click« system



Main height
adjustment profile



Height adapter tube



Support tube



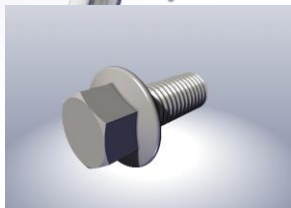
Main carrier tube



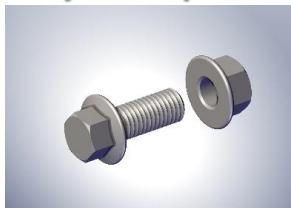
Panel support profile



Panel profile connector



M8 bolt



M12 bolt with nut



EASY TO INSTALL

ADJUSTABLE

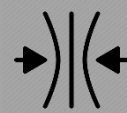


FAST



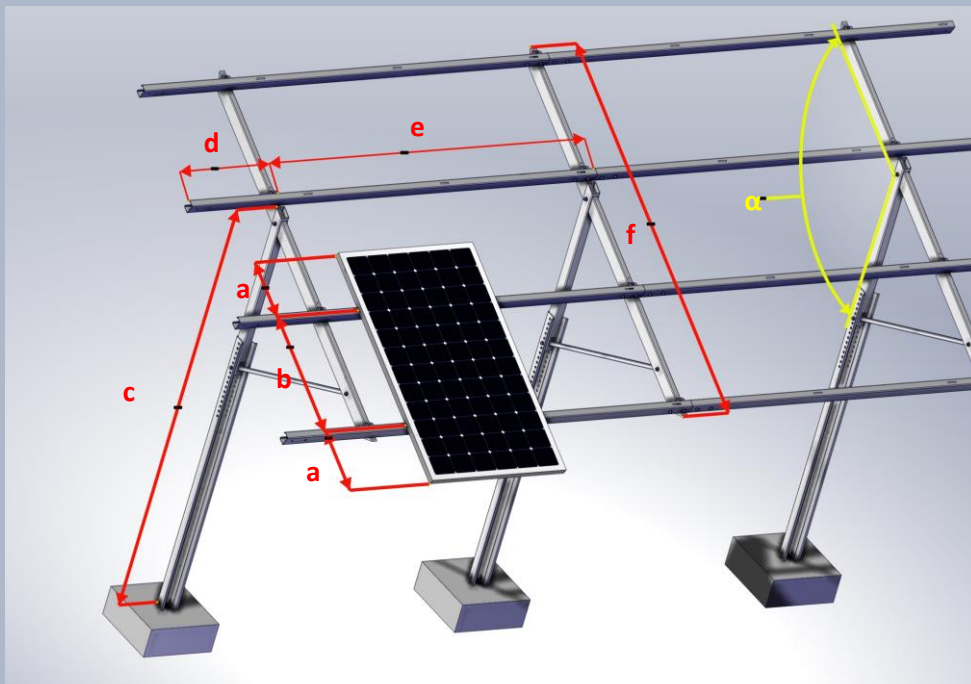
EFFICIENT
COOLING

ADAPTABLE



LIGHTWEIGHT





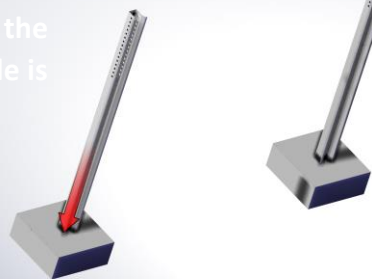
TECHNICAL DATA

Application	All flat surfaces
Roof angle adjustment	15 ° or custom
Fixture	Mounting profiles
Panel orientation	Horizontally or vertically
Panel dimensions	Wide range of panels
Max. load capacity	Vertical – 100 kg Horizontal – 180 kg
Max. snow load	0 – 2,4 kN/m ² (with panels)
Max. wind speed	0-110 km/h → zones 1, 2 in 3
Material	Stainless steel, Aluminium, Steel

IMPORTANT DIMENSIONS

a	<40 cm	e	<230 cm
b	80 – 150 cm	f	270 cm
c	240 – 300 cm	α	15°
d	<65 cm		

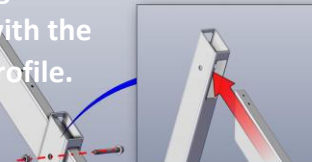
1. Adequate support of the main profile is required.



2. Adjusting the desired height of the construction



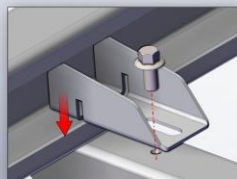
3. Joining the main profile with the height profile.



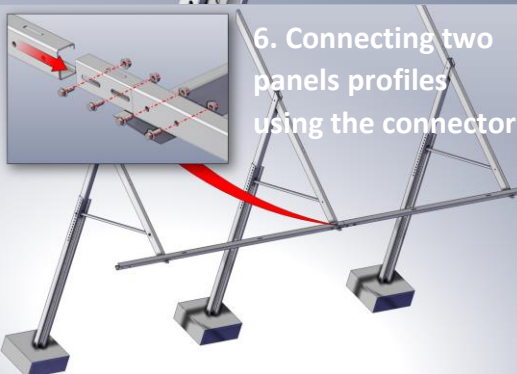
4. Additional support of panels with the support tube



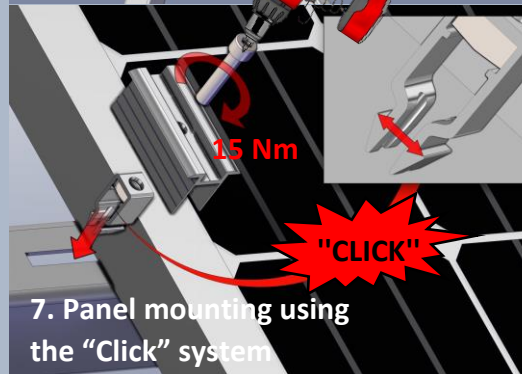
5. Mounting the panel profiles using the special clamps



6. Connecting two panels profiles using the connector



7. Panel mounting using the "Click" system



8. End and middle clamps

